



Aspen Fire Protection District

August 30, 2023 | 420 E. Hopkins

Ali Hammond

Director of Community Wildfire Resilience

ali.hammond@aspensfire.com | 970-452-7489



<https://www.civilbeat.org/2023/08/what-saved-the-miracle-house-in-lahaina/>

All Things Wildfire

- Setting the scene
- What is Aspen Fire doing?
- What can you work on?
- Q&A with public safety panelists

Rapid Smoke Detection Cameras

Pano AI uses artificial intelligence to rapidly detect smoke, triangulate its location, and communicate with first responders.





Community resilience means
living with fire
and proactively reducing
its destructive consequences.

**What factors can help a wildfire
get out of control?**

Colorado: Wildfires in Context

- Fire experts in the West agree – Wildfires are getting worse, especially the past 3-5 years.
- **Challenges:** fuel load on the ground from fire suppression
 - **Factors:** Winds, housing density, overgrown forests, slope/ aspect/ terrain, population growth, bark beetles, drought

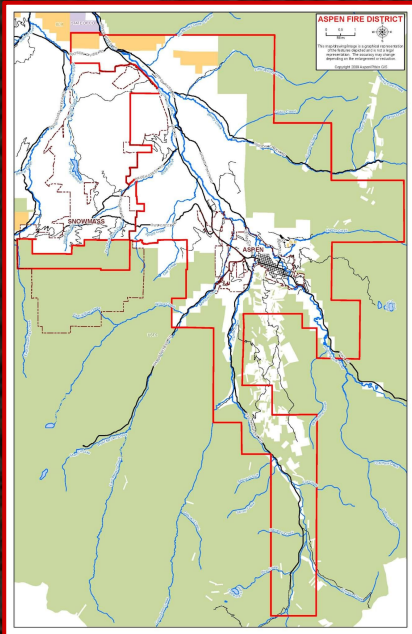
Top 10 CO Fires by Acreage

Rank	Fire	Acres	Year
1	Cameron Peak	208,913	2020
2	East Troublesome	193,812	2020
3	Pine Gulch	139,007	2020
4	Hayman	137,760	2002
5	Spring Creek	108,045	2018
6	High Park	87,284	2012
7	Missionary Ridge	70,285	2002
8	West Fork	58,570	2013
9	416	54,129	2018
10	Papoose	49,628	2013

List from dfpc.colorado.gov



Aspen Fire Protection District



- 5 fire stations
- 87 square miles (~55,680 acres)
- **\$56.9 Billion** in assessed property value

**What is our realistic
immediate response capacity?**

Preparedness makes a huge difference.



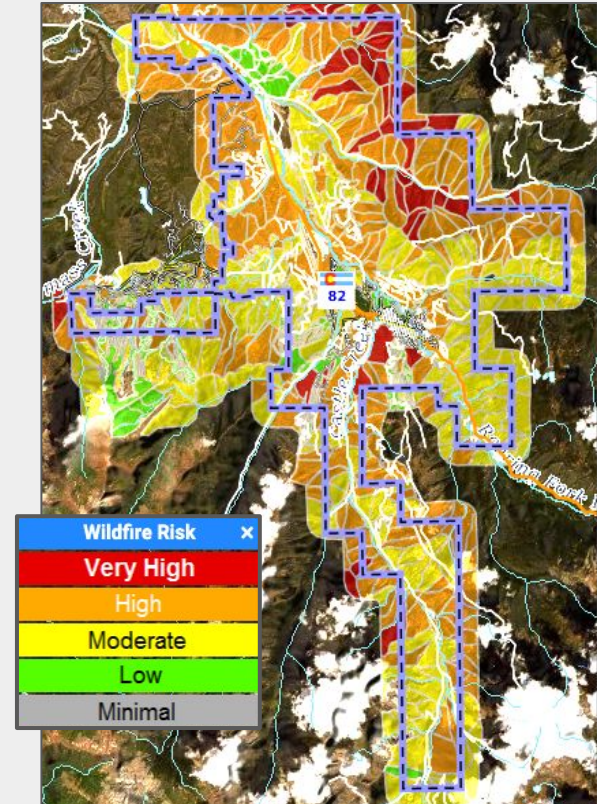
<https://www.civilbeat.org/2023/08/what-saved-the-miracle-house-in-lahaina/>

**What is happening locally to address
wildfires?**

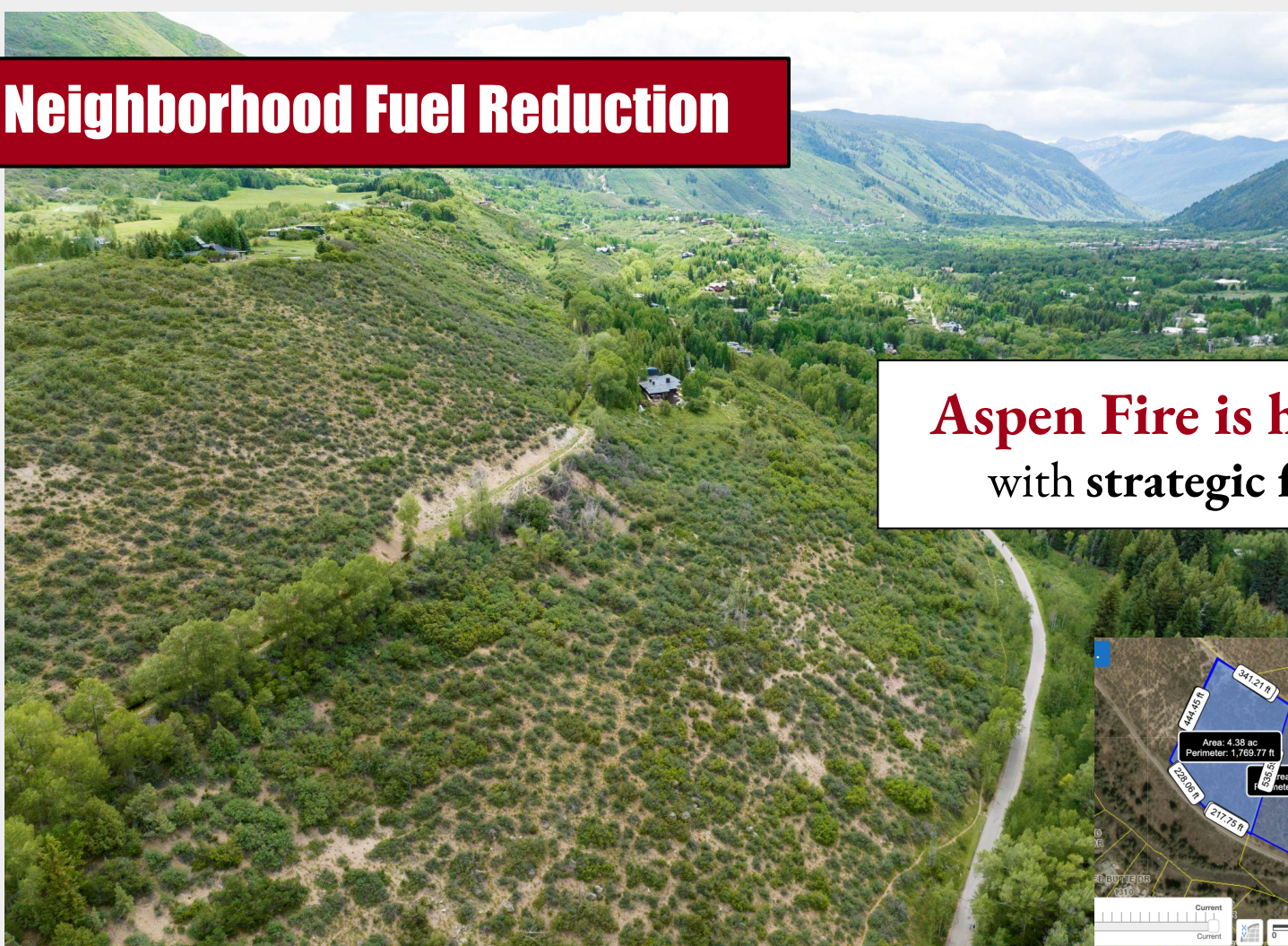
Homeowner Mitigation Resources

Aspen Fire provides:

- Risk Assessments
- Wildfire risk mapping
- Education & resources
- Project coordination
- Community Chipping Program



Neighborhood Fuel Reduction

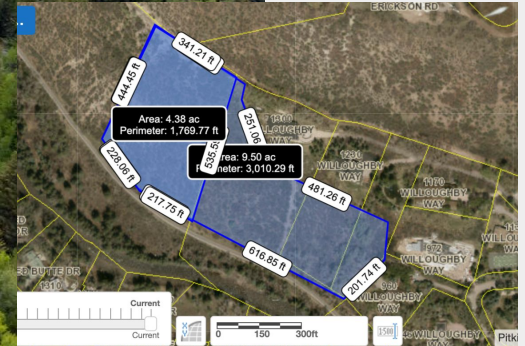


Aspen Fire is here to help
with **strategic fuel breaks**



Neighborhood Fuel Reduction

Aspen Fire is here to help
with strategic fuel breaks



LANDSCAPE TREATMENTS

Aspen Fire is facilitating

- Prescribed burns
- Early Detection
- Bark Beetle MCH treatments

Habitat
Improvement

=

Fire Mitigation

=

Watershed
Protection



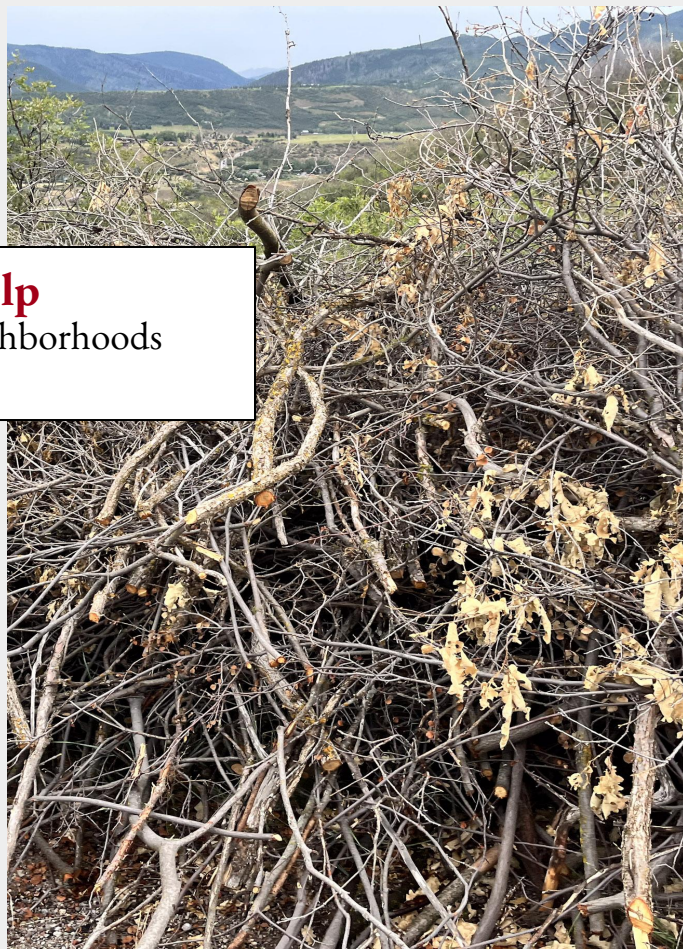
Prescribed Fire



2022 - 900 Acres Treated in HC
2023 - 750 Acres Treated in CC

Chipping Program

Aspen Fire is here to help
with hauling brush from high-risk neighborhoods



Roaring Fork Valley Wildfire Collaborative

Partners:

- Aspen Institute
- City of Aspen
- Town of Snowmass Village
- Town of Basalt
- Town of Marble
- Town of Carbondale
- City of Glenwood Springs
- Pitkin County
- Eagle County
- Garfield County
- Gunnison County
- Aspen Fire Protection District
- Roaring Fork Fire & Rescue
- Carbondale & Rural Fire Protection District
- Glenwood Springs Fire Department
- US Forest Service
- Bureau of Land Management
- CO State Forest Service
- CO Parks & Wildlife
- CO Division of Fire Prevention & Control
- CO Fire Commission
- National Forest Foundation
- Fire Adapted Colorado (FACO)
- CO Timber Industry Association
- Aspen Center for Environmental Studies
- Aspen Valley Land Trust
- Wilderness Workshop
- Aspen Skiing Company
- Sunlight Ski Area
- Holy Cross Cattlemen's' Association
- Watershed Biodiversity Initiative
- Middle Colorado Watershed Council
- Mount Sopris Conservation District
- Roaring Fork Conservancy
- 10th Mountain Huts
- TriColor Radio (Spanish Language)
- Ruedi Water & Power
- Holy Cross Energy
- Colorado Springs Utilities
-and growing!

Potential Operational Delineations (PODS)

AFPD PODS Map

- holding features - RED
- water sources - BLUE
- past and future treatment areas - ORANGE
- safety zones - YELLOW
- Staging areas - PURPLE
- Landing zones/ heli spots - GREEN
- Known HAZMAT area - BLACK
- Utilities/ Critical infrastructure - PINK
- areas of opportunity -- White

Ali Hager

Auto-saved seconds ago

New feature

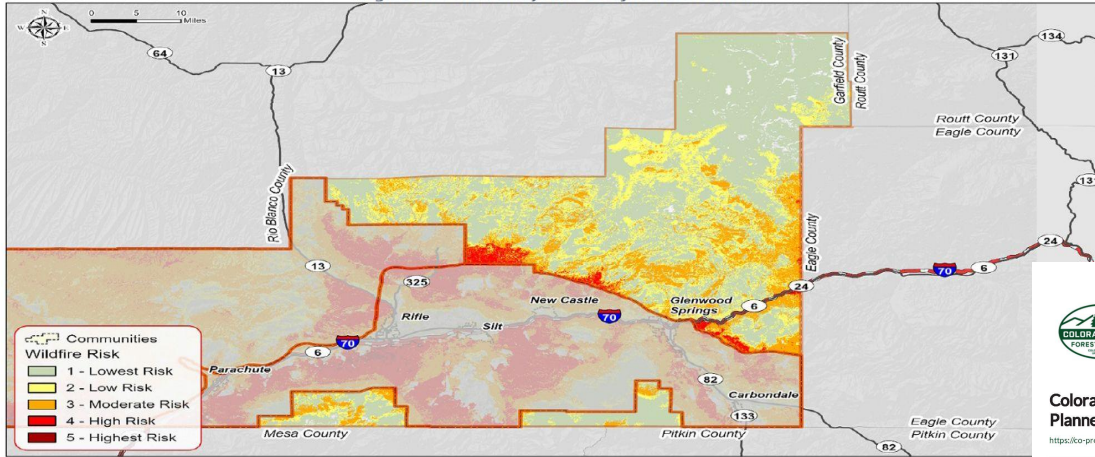
Present

- ▶ Holding Features
- ▶ Safety Zones
- ▶ = Areas of opportunity
- ▶ Critical Infrastructure/ Utilities



Maps, maps, maps!

Figure 12: Forest Study Area Wildfire Hazard Area



Forest Study Area 2022 Hazard Mitigation Plan Wildfire Hazard

Created by: AFPPD
 Date of Review:
 Reviewer:
 Approved:
 Approved Date:
 Approved By:
 Approved Date:



Colorado Risk Reduction Planner

<https://co-pro.colorado-forestas.org>

AFPPD Forest Action Plan Composite

Represents priority areas where goals from the Forest conditions, living with wildfire, and watershed protection themes can be achieved on the same management footprint by a project or activity.

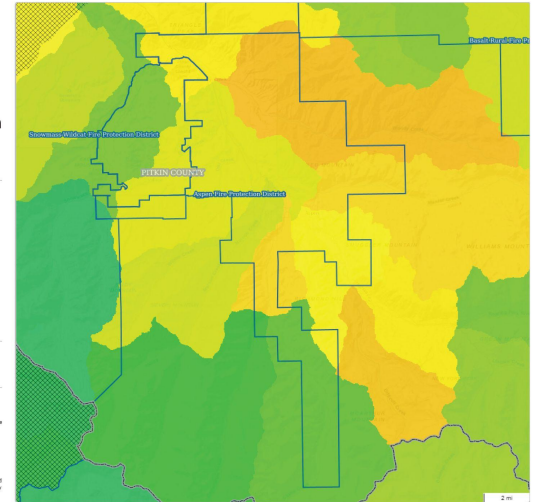
Created on:
 3/31/2023, 3:53 PM

Disclaimer

The user assumes the entire risk related to their use of the Colorado Wildfire Risk Reduction Planner and neither the author or publisher is liable for these risks.

The Colorado Forest Service is providing these data "as is" and does not warrant any accuracy, whether expressed or implied, including but not limited to any number, description of area, or other data for any particular purpose.

In no event shall Colorado Forest Service be liable to any user for any direct, indirect, incidental, consequential, special or exemplary damages or loss profit resulting from any use or misuse of these data.



Whose job is it to keep you safe?

**The scope & scale is bigger than our capacity
to handle.**

Do your part so we can do ours.

Which is most likely to cause a home ignition?

- A. An ember from a wildfire a mile away
- B. The active flame front moving through your area
- C. Lightning strike



**What would you wish you'd done ahead of
time?**

Think like a firefighter.

Think like an ember.

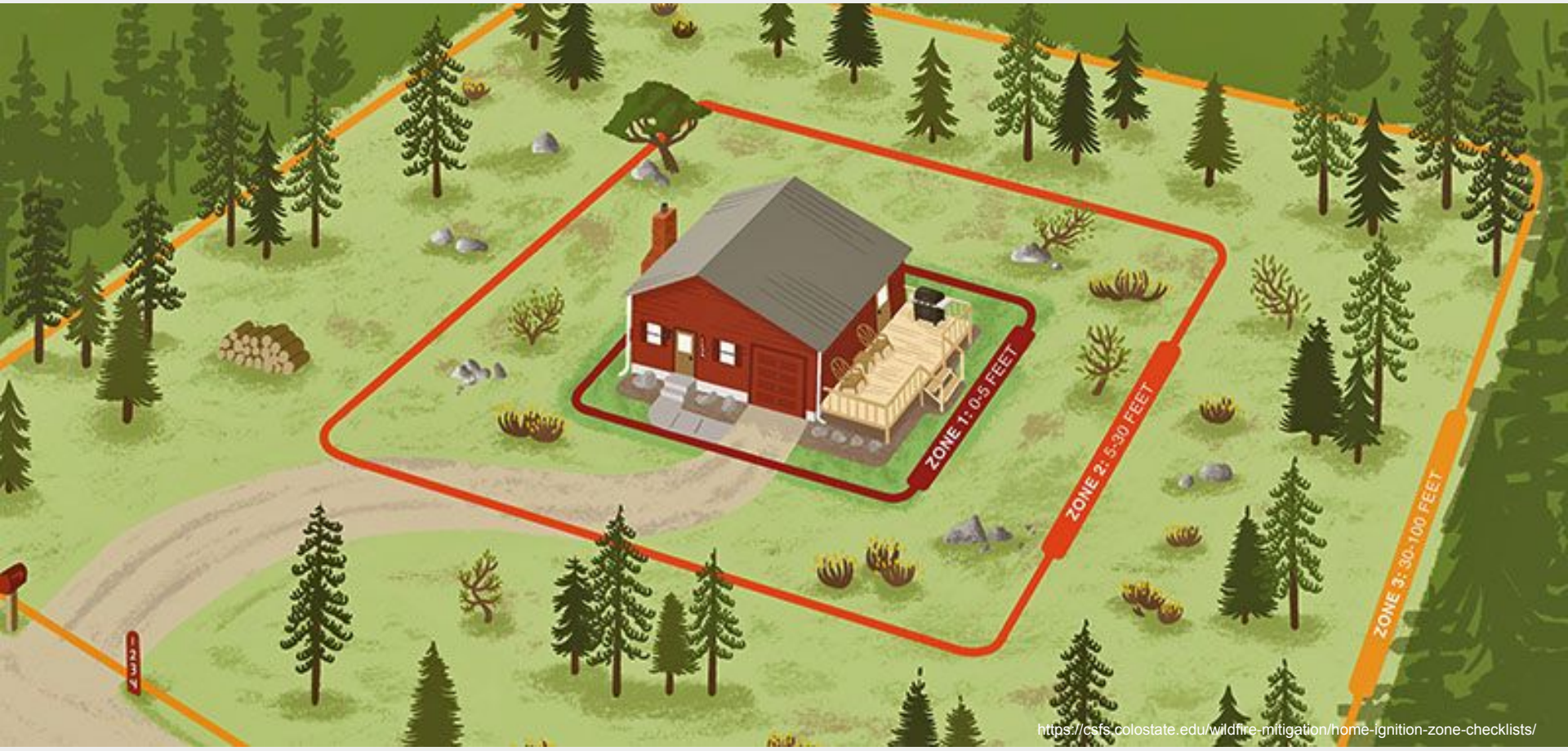
Home Hardening

Wildfire-Resistance: Make the “RIGHT” Choices





Defensible Space





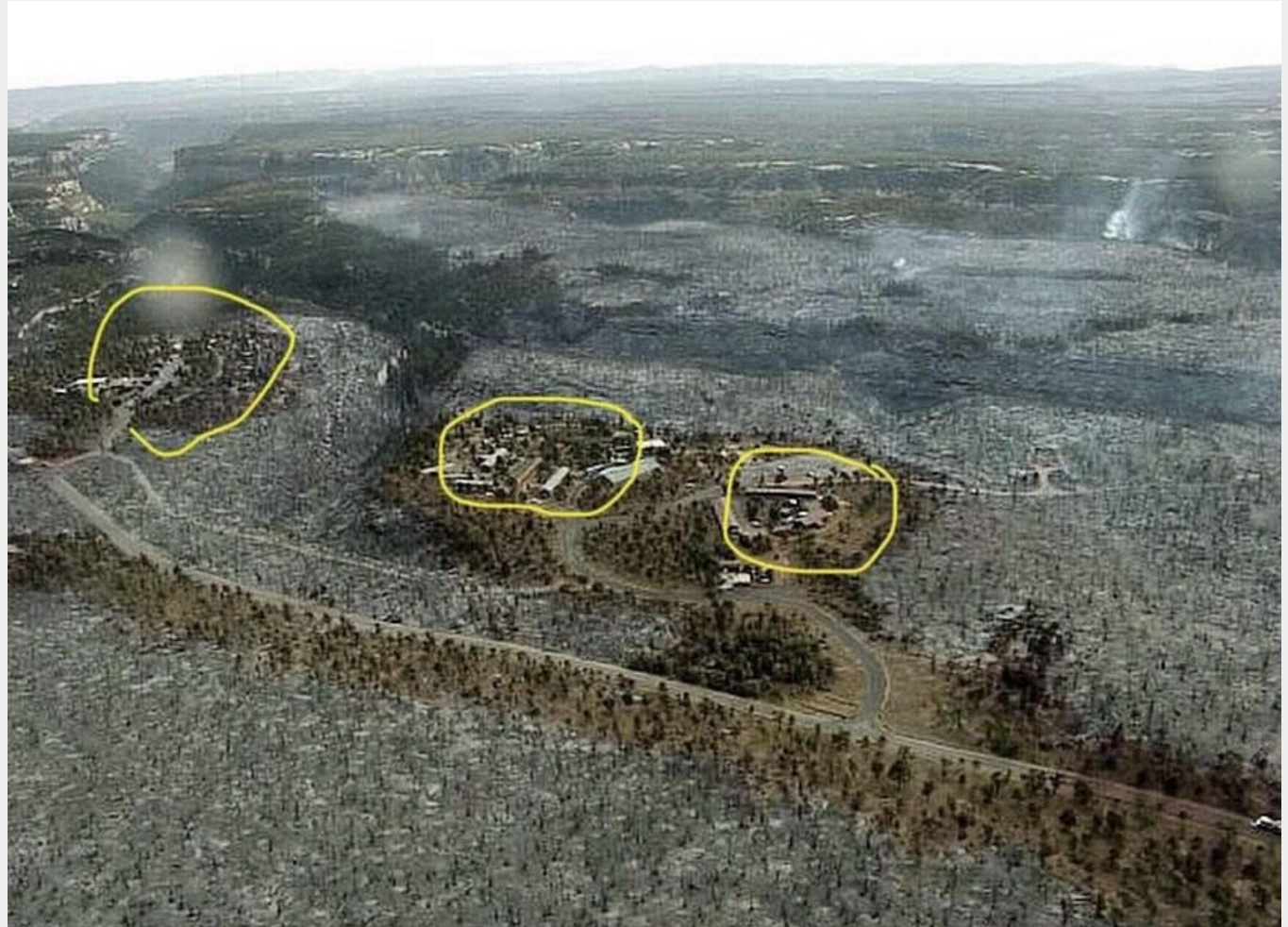
“Fuels Reduction,” not “Clear-Cutting”

Not all fuels are created equally:



Mitigation Makes A Difference

Long Mesa Fire, 2002



El Jebel

Lake Christine Fire,
2018



Evacuations:

- Know what you need to bring
- Make a plan ahead of time with your family
- Leave early
- Have a contingency plan
- Sign up at www.PitkinAlert.org
- Download [Reachwell App](#) for translation

Contingency Planning



Getting Involved: Community Effort

- Create defensible space: participate in Aspen Fire's community chipping program.
- Talk to your HOA about roadside fuels.
- Become a neighborhood ambassador.
- Talk to your elected officials.
- Help fund a program that is meaningful to you.

“Community resilience means **living with fire** and proactively reducing its destructive consequences.”



For more info, visit **AspenFire.com/wildfire**
or contact:

Ali Hammond

Director of Community Wildfire Resilience

ali.hammond@aspenfire.com or (970) 452-7489

Panel Q&A

Panelists

Moderator: Rick Balentine, Aspen Fire Chief

Panelists:

Michael Buglione, Pitkin County Sheriff

Jim Genung, Upper Colorado River Interagency Fire Management, US Forest Service Deputy Fire Management Officer

Jake Spaulding, Aspen Fire Wildfire Battalion Chief

Bill Linn, Aspen Police Department Assistant Chief

Parker Lathrop, Pitkin County Sheriff's Office Chief Deputy of Operations

Claudia Kirby, Western Colorado Red Cross

Valerie Carlin, West Mountain Regional COAD (Community Organizations Active in Disaster)

Fire Warden



<https://5280fire.com/home/colorado-law-enforcement/pitkin-county-law-enforcement/pitkin-county-sheriff/>

El Jebel

Lake Christine Fire,
2018





E38

ASPEN
FIRE PROTECTION DISTRICT

ENGINE 3



<https://aspenjournalism.org/aspen-in-2021-saw-one-of-its-lowest-car-counts-in-decades-so-why-does-it-feel-like-local-traffic-is-at-a-breaking-point/>



No service?

Tune in to **Aspen Public Radio** at **91.5 FM** in Aspen and **88.9FM** anywhere in the valley, when the power goes out or internet is down, for live, up-to-the-minute information.

THE SIX P'S



IN CASE IMMEDIATE EVACUATION IS REQUIRED, REMEMBER:

- P**eople and pets
- P**apers, phone numbers, and important documents
- P**rescriptions, vitamins, and eyeglasses
- P**ictures and irreplaceable memorabilia
- P**ersonal computer hard drive and disks
- P**lastic (credit cards, ATM cards) and cash





“We need trained volunteers to help respond to live incidents”

